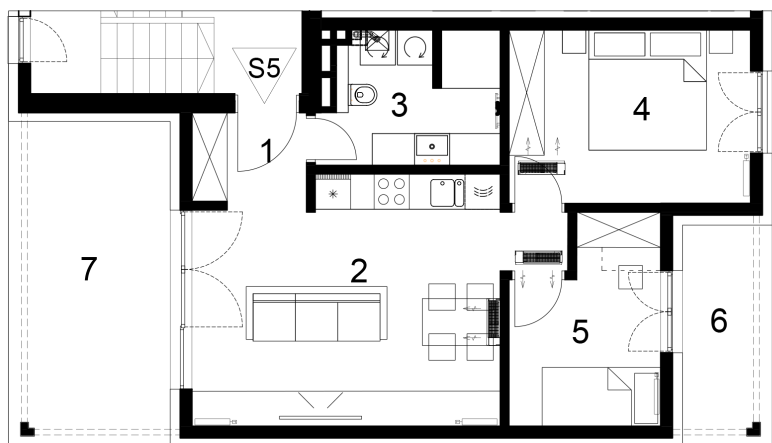
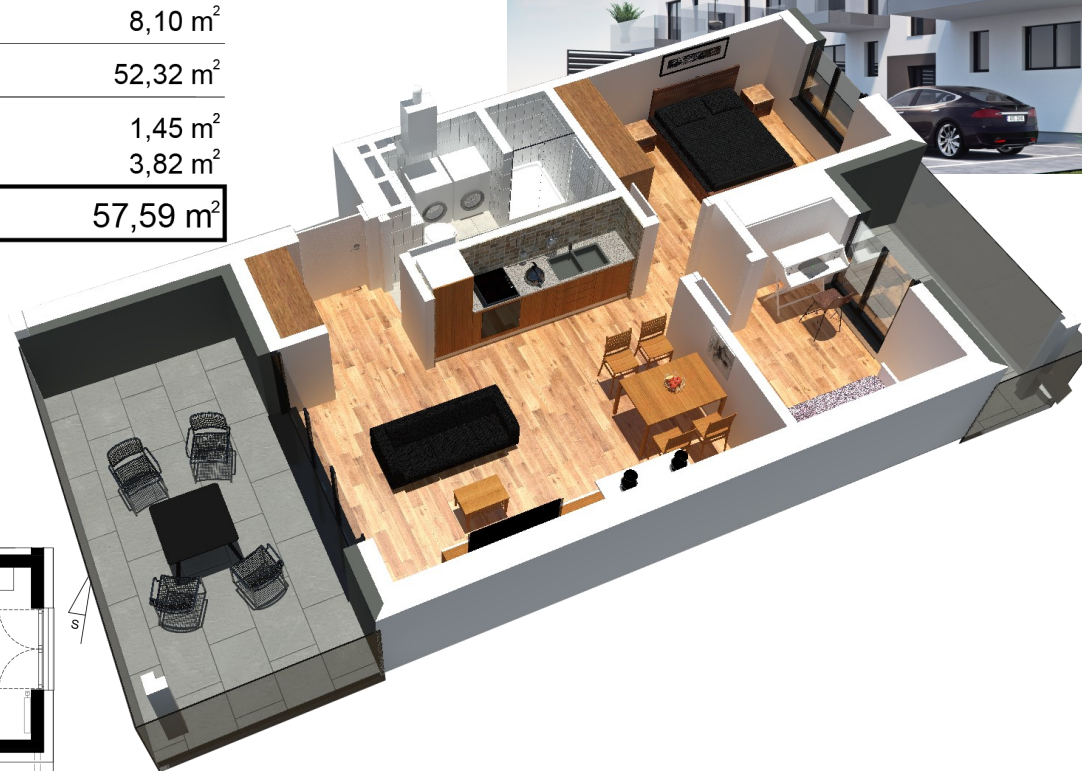


## DVOSOBNI STAN

## UVUČENI KAT

prostorija	netto površina m <sup>2</sup>	netto obrač.površina m <sup>2</sup>
1. ulaz	3,15 m <sup>2</sup>	3,15 m <sup>2</sup>
2. dn.boravak+blagovaonica	22,39 m <sup>2</sup>	22,39 m <sup>2</sup>
3. kupaonica	6,53 m <sup>2</sup>	6,53 m <sup>2</sup>
4. soba 1	12,15 m <sup>2</sup>	12,15 m <sup>2</sup>
5. soba 2	8,10 m <sup>2</sup>	8,10 m <sup>2</sup>
Ukupno	52,32 m <sup>2</sup>	52,32 m <sup>2</sup>
6. nenatkrivena terasa	5,80 m <sup>2</sup>	1,45 m <sup>2</sup>
7. nenatkrivena terasa	15,29 m <sup>2</sup>	3,82 m <sup>2</sup>
<b>UKUPNO STAN S5</b>	<b>73,41 m<sup>2</sup></b>	<b>57,59 m<sup>2</sup></b>



**STAMBENA GRAĐEVINA OZNAKE BOROVJE 2  
LETOVANIČKA ULICA ZAGREB**